

ICSE Board
Class VIII Biology
Sample Paper – 2

Time: 2 hrs

Total Marks: 75

General Instructions:

1. **All** questions are **compulsory**.
 2. Questions 1 to 15 carry one mark each.
 3. Questions in 2 A and B carry one mark each.
 4. Questions in 3 A carry one mark each and B carries 5 marks.
 5. Question 4 A and B carries 5 marks each.
 6. Questions in 5 A and B carry one mark each.
 7. Questions in 6A and B carry one mark each.
 8. Question 7 A and B carry five marks each.
-

Question 1

Choose the correct answer out of the four available choices given below each question. [15]

1. The leaves of _____ can give rise to a new plant.
(a) Mango
(b) *Bryophyllum*
(c) *Bougainvillea*
(d) Rose
2. The exocrine part of pancreas secretes _____.
(a) Bile juice
(b) Pancreatic juice
(c) Gastric juice
(d) None of the above
3. The heart is a muscular organ made up of _____ muscles.
(a) Cardiac
(b) Skeletal
(c) Smooth
(d) Both 1 and 2
4. Which of the following vaccines contains killed germs?
(a) TAB vaccine for typhoid
(b) Salk's vaccine for poliomyelitis
(c) Vaccine for rabies
(d) BCG vaccine for tuberculosis

5. Whooping cough is a/an _____.
(a) Droplet infection
(b) Food borne infection
(c) Air borne infection
(d) Water borne infection
6. Reflex actions are under the control of the _____.
(a) Brain
(b) Medulla oblongata
(c) Spinal cord
(d) Cerebellum
7. Grass → _____ → Tiger.
Which of the following best fits in the above food chain?
(a) Deer
(b) Eagle
(c) Bacteria
(d) Lion
8. The term 'ecosystem' is derived from the Greek word 'oikos' meaning
(a) Body weight
(b) Food
(c) House
(d) Size
9. A butterfly in its development from larva to adult shows _____.
(a) Fertilisation
(b) Metamorphosis
(c) Multiplication
(d) Both (1) and (2)
10. Which of the following changes are not associated with adolescence?
(a) Change in body shape
(b) Change in voice
(c) Increase in height
(d) Decreased activity of sweat and sebaceous glands
11. The technique of crossing two individuals of different varieties is called _____.
(a) Tissue culture
(b) Self pollination
(c) Cross pollination
(d) Hybridisation

12. Which one of the following favours the fastest transpiration rate?
- (a) A cool, humid, windy day
 - (b) A hot, humid, windy day
 - (c) A hot, humid, still day
 - (d) A hot, dry, windy day
13. _____ is a cross-breed cow milch species.
- (a) Red sindhi
 - (b) Karan swiss
 - (c) Jersey
 - (d) Sahiwal
14. The absence or low number of clotting factors results in a rare condition called_____.
- (a) Anaemia
 - (b) Sickle cell anaemia
 - (c) Haemophilia
 - (d) Filaria
15. Marasmus is caused due to lack of _____.
- (a) Carbohydrates
 - (b) Proteins
 - (c) Fats
 - (d) Both (1) and (2)

Question 2

(A) Mention the food constituent which may be lacking in ones diet, in case of the following: [5]

- 1. A child having rickets
- 2. A person suffering from scurvy
- 3. A person suffering from beri-beri
- 4. A child suffering from kwashiorkor
- 5. A person suffering from anaemia

(B) Fill in the blanks and rewrite the sentences: [5]

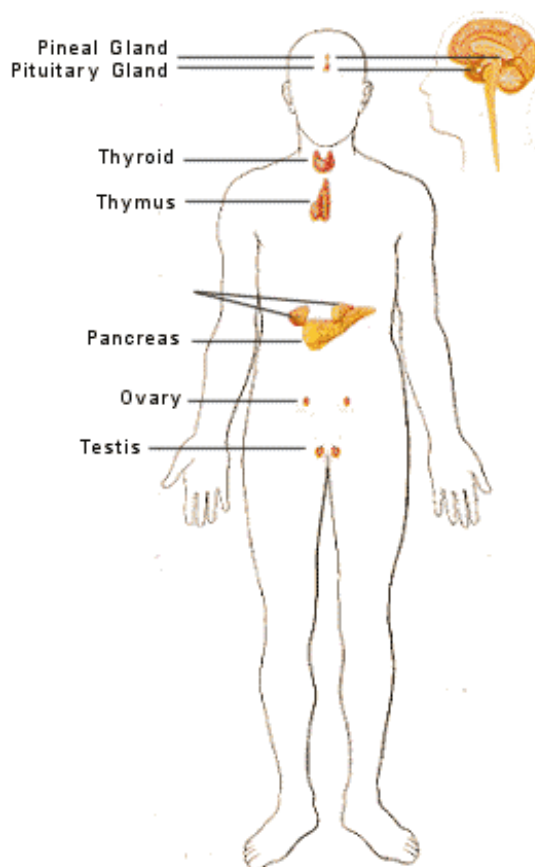
- 1. Reproduction in spirogyra is by means of _____.
- 2. The colourless fluid that flows within the lymphatic system is called _____.
- 3. Kwashiorkor is caused due to the deficiency of _____.
- 4. _____ cells produce testosterone.
- 5. The period of life when the body undergoes development leading to reproductive maturity is called _____.

Question 3

(A) Match the items in column I with the appropriate items in column II. [5]

Column A	Column B
1. Diabetes	a) oestrogen
2. Bread mould	b) uses energy
3. Ovaries	c) insulin
4. Active transport	d) liquid component of blood
5. Plasma	e) spores

(B) Study the diagram below and answer the questions that follow: [5]

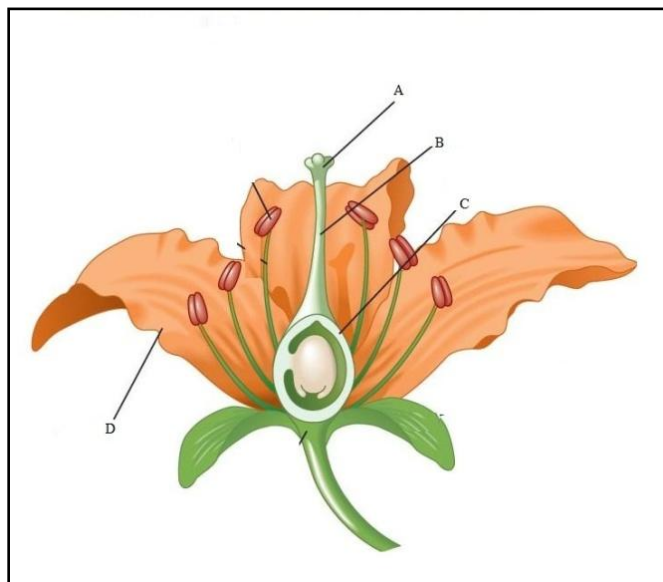


1. Name the gland above the kidney?
2. Name two glands that are associated with the digestive system through their secretions? (endocrine glands)
3. Which hormone is made up of iodine?
4. What is a mixed gland? Give an example?

Question 4

(A)

[5]



- i. Name the parts A, B, C and D.
- ii. State the function of part A.

(B) Draw a neat diagram of the following and only, label the parts mentioned against it.[5]

1. Nerve cell
2. Section of artery and vein

Question 5

(A) Give one point of difference between the following on the basis of what is given in the brackets: [5]

1. Fragmentation and regeneration (process)
2. Endocrine glands and exocrine glands (secretions)
3. Artery and vein (muscular wall)
4. Kharif crops and rabi crops (season of cultivation)
5. Xylem and phloem (substances transported)

(B) Complete the correlation.

[5]

1. Fresh water fish: Tilapia:: _____: Marine water fish
2. Millets: cereals:: Hemp: _____
3. Bombyx mori: Sericulture:: Apiculture: _____
4. Fry: Nursery tank:: Rearing tank: _____
5. Fowl Pox: Ranikhet:: _____: Bacterial disease

Question 6

(A) What is a reflex arc? Answer the following in the correct sequence: [5]

1. A sensory neuron conducts the impulse from the receptor to the spinal cord.
2. A receptor receives a stimulus.
3. The motor neuron passes the impulse to an effector, which carries out the action in response to the stimulus.
4. An association neuron transmits the impulse from the sensory neuron to a motor neuron.

(B) Define the following terms: [5]

1. Gestation period
2. Diffusion
3. Apiculture
4. Blood transfusion
5. Ecosystem

Question 7

(A)

1. Give scientific reasons: [3]
 - (a) Adolescents need to plan their diet and lifestyle to maintain a healthy body.
 - (b) Yeast is used in bakery products.
 - (c) The scrotum lies outside the body cavity.
2. A man was suffering from diabetes. He was urinating frequently in copious amounts resulting in loss of water. Which type of diabetes is this and which hormone is responsible for it? [2]

(B)

1. What is a food pyramid? What is the role of food pyramid in the functioning of ecosystems? [3]
2. Explain the method of asexual reproduction in plants by any one sub-aerial stem. (Draw a diagram if necessary). [2]