

ICSE Board
Class VII Biology
Sample Paper – 2

Time: 2 hrs

Total Marks: 75

General Instructions:

1. All questions are **compulsory**.
2. Questions 1 to 15 carry one mark each.
3. Questions in 2 A and B carry one mark each.
4. Questions in 3 A carry one mark each and B carries 5 marks.
5. Question 4 A and B carries 5 marks each.
6. Questions in 5 A and B carry one mark each.
7. Questions in 6A and B carry one mark each.
8. Question 7 A and B carry five marks each.

Question 1

Choose the correct answer out of the four available choices given below each question. [15]

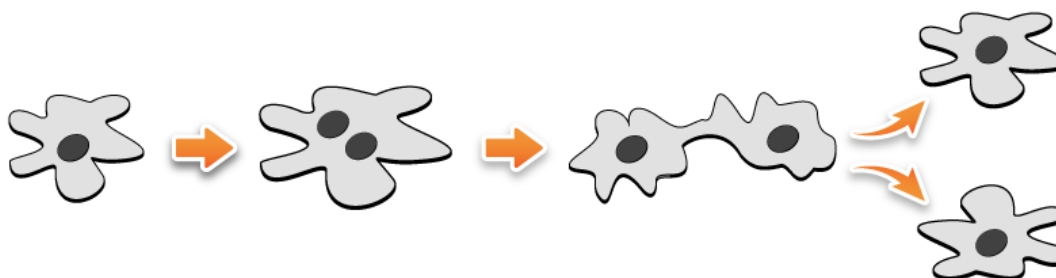
1. Which of the following tissues consists of dead cells?
(a) Sclerenchyma
(b) Parenchyma
(c) Collenchyma
(d) Aerenchyma
2. Tendons connect _____ to _____.
(a) Muscles to bones
(b) Muscles to skin
(c) Bones to skin
(d) Muscles to muscles
3. Fluid connective tissue in humans is
(a) Blood and cartilage
(b) Lymph and plasma
(c) Blood and lymph
(d) Bone and cartilage
4. Based on whether they produce fruits or not, plants are classified into
(a) Angiosperms and gymnosperms
(b) Bryophytes and pteridophytes
(c) Angiosperms and bryophytes
(d) Gynosperms and pteridophytes

5. Oxygen and carbon dioxide are exchanged at the _____.
(a) Nasal cavities
(b) Trachea
(c) Pharynx
(d) Alveoli
6. Which of the following has a scaly skin on its body and breathes with the help of gills?
(a) Rohu
(b) Tortoise
(c) Sparrow
(d) Rat
7. Carbohydrates are stored by the plants in the form of
(a) Vitamins
(b) Fats
(c) Proteins
(d) Starch
8. Which of the following refers to the energy currency of the cell?
(a) ATP
(b) ADP
(c) NADH
(d) NADP
9. Which of following tissues stores fats?
(a) Areolar tissue
(b) Adipose tissue
(c) Epithelial tissue
(d) Ligaments
10. Which of the following chemicals is added during respiration experiments to prevent bacterial growth on dead seeds?
(a) Citric acid
(b) Carbolic acid
(c) Pyrogalllic acid
(d) Potassium permanganate
11. Which of the following stores urine?
(a) Ureter
(b) Urethra
(c) Urinary bladder
(d) Kidney

12. Excretion in Amoeba takes place with the help of _____.

- (a) Food vacuole
- (b) Contractile vacuole
- (c) Pseudopodia
- (d) Cilia

13. Identify this method of reproduction.



- (a) Multiple fission
- (b) Fragmentation
- (c) Binary fission
- (d) Segmentation

14. Nephrons release urine into the _____, from where the ureters carry it to the urinary bladder.

- (a) Glomerulus
- (b) Kidneys
- (c) Renal pelvis
- (d) None of these

15. Which of the following occurs due to allergic reaction 'hives'?

- (a) Lining of the nasal cavity becomes inflamed
- (b) Walls of the bronchioles contract
- (c) Blood pressure decreased
- (d) Swollen, red patches appear on the skin

Question 2

A. Name the following.

[5]

1. Tissue involved in the transport of food in plants.
2. The middle portion of an insect's body.
3. Organisms in which the body consists of thread-like structures.
4. Tiny openings found on the lower side of the leaf for the exchange of gases.
5. Amphibians of plant kingdom.

B. Fill in the blanks. [5]

1. Starfish moves with the help of _____.
2. Each nephron consists of a cup-shaped structure called _____.
3. _____ are tiny structures capable of producing new plants.
4. Annelids have special organs for excretion called _____.
5. Stomata are surrounded by a pair of bean-shaped cells called _____ cells.

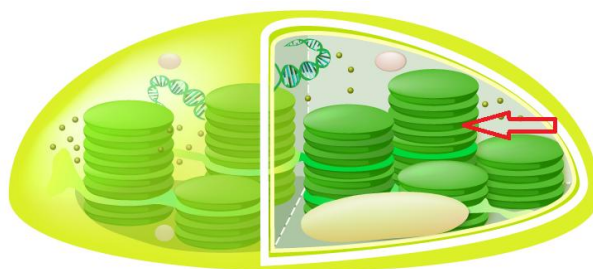
Question 3

A. Match the following. [5]

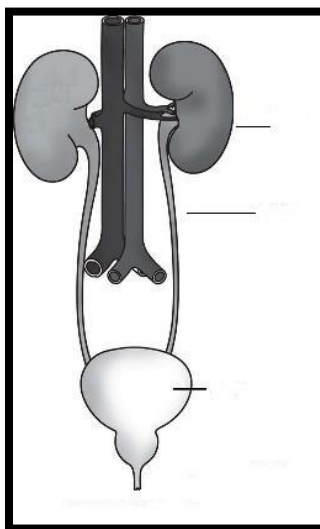
Column A	Column B
1. Sponge	A. Reptilia
2. Snail	B. Amphibia
3. Butterfly	C. Porifera
4. Toad	D. Mollusc
5. Lizard	E. Arthropoda

B. Answer the following.

1. Observe the picture given below and identify the cell structure. In which type of cell is this structure present? What is its role? [2]



2. Observe the picture given below and label the parts. [3]



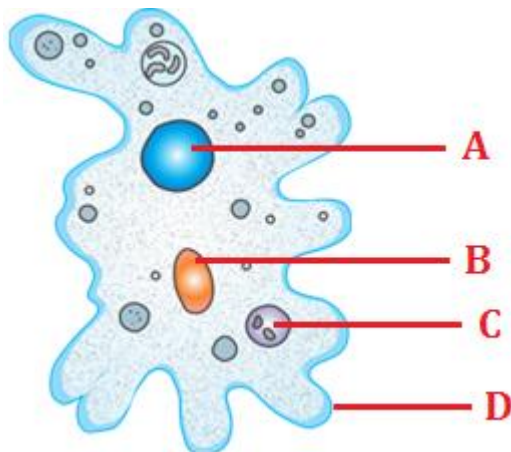
Question 4

A.

(a) What are allergens? Name any two allergens. [2]

(b) Which test is mostly preferred to test an allergy, skin prick test or blood test? Why? [3]

B. Identify the figure and label its parts. [5]



Question 5

A. Complete the table given below. [5]

	Aerobic respiration	Anerobic respiration
Oxygen requirement		
End products		
Energy released		

B. Find the odd one out. [5]

1. Tannin, Urea, Uric acid, Bile
2. Cerebrum, Medulla, Spinal nerves, Cerebellum
3. Bat, Blue whale, Flying squirrel, Water strider
4. Typhoid, Hay fever, Hives, Asthma
5. Xylem, Parenchyma, Meristem, Ligament

Question 6

- A. State the differences between respiration and photosynthesis. [5]
- B. Define the following terms. [5]
1. Egestion
 2. Tissue
 3. Symbiosis
 4. Monocotyledons
 5. Breathing

Question 7

- A. Write two characteristics and one example for each of the following: [5]
1. Arthropoda
 2. Annelida
 3. Mollusca
- B. Answer the following.
1. State the commercial importance of yeast. [2]
 2. Write three points of differences between xylem and phloem. [3]