

CBSE
Class VIII Science
Sample Paper – 5
Term II

Time: 3 hrs

Total Marks: 100

General Instructions:

1. The question paper consists of 44 questions and is divided into **four sections, A, B, C and D**
2. All questions are compulsory.
3. **Section A** comprises of question numbers **1 to 20**. These are multiple choice questions carrying **one mark each**. You are to select one most appropriate response out of the four provided options.
4. **Section B** comprises of question numbers **21 to 30**. These are SAQ's carrying **two marks each**.
5. **Section C** comprises of question numbers **31 to 40**. These are SAQ's carrying **four marks each**.
6. **Section D** comprises of question numbers **41 to 44**. These are SAQ's carrying **five marks each**.

SECTION A

1. Which hormone is responsible for the development of secondary sexual characters in females? [1]
(a) Testosterone
(b) Estrogen
(c) Progesterone
(d) Insulin
2. Where does external fertilisation take place? [1]
(a) Air
(b) Water
(c) Soil
(d) Plants
3. The process of release of egg by the ovaries is called [1]
(a) Ovulation
(b) Implantation
(c) Gestation
(d) Menstruation

4. Which of the following is caused by HIV? [1]
(a) AIDS
(b) Syphilis
(c) Chicken pox
(d) Diabetes
5. Which organelle among the following is the called protein factory? [1]
(a) Ribosomes
(b) Lysosomes
(c) Nucleus
(d) Vacuoles
6. Which structure in Amoeba helps it to change its shape? [1]
(a) Pseudopodia
(b) Cilia
(c) Flagella
(d) Parapodia
7. A substance which catches fire instantly on exposure to a flame is called a/an [1]
(a) Exhaustible substance
(b) Non-flammable substance
(c) Inflammable substance
(d) Inexhaustible substance
8. Exposure to which of the following gases cause dizziness, headache and even death? [1]
(a) Carbon dioxide gas
(b) Sulphur dioxide gas
(c) Nitrogen dioxide gas
(d) Carbon monoxide gas
9. Forest fires generally arise in the [1]
(a) Summer
(b) Winter
(c) Spring
(d) Rainy season
10. Blue flame on a kerosene stove indicates [1]
(a) Incomplete combustion
(b) Complete combustion
(c) Unburnt carbon particles
(d) Less temperature

- 11.** Which radiations are trapped inside the Earth and not allowed to escape from the Earth's atmosphere? [1]
(a) Ultraviolet rays
(b) Infra red rays
(c) Gamma rays
(d) Visible rays
- 12.** Which of the following is not a natural source of air pollution? [1]
(a) Volcanic eruptions
(b) Forest fires
(c) Dust storms
(d) Photochemical smog
- 13.** Which among the following is a major water pollutant leading to the death of aquatic species? [1]
(a) Pesticides and fertilisers
(b) River water dumped into the sea
(c) Chlorine
(d) Untreated domestic sewage
- 14.** Which of the following is not a strong electrolyte? [1]
(a) Acetic acid solution
(b) Sulphuric acid solution
(c) Hydrochloric acid solution
(d) Sodium hydroxide solution
- 15.** For electroplating copper onto an iron object, which terminal of the battery is connected to the iron object? [1]
(a) Positive terminal of the battery
(b) Negative terminal of the battery
(c) Any terminal- positive or negative
(d) It has to be connected to both the terminals simultaneously.
- 16.** Which of the following statements are correct? [1]
1. An earthquake is a sudden shaking or trembling of the Earth.
2. The Earth is balanced on the horn of a bull and when the bull shifts it to the other horn, an earthquake takes place.
3. Earthquakes occur all the time, all over the Earth.
4. Major earthquakes can cause immense damage.
(a) 1, 2, 3
(b) 2, 3, 4
(c) 1, 2, 4
(d) 1, 3, 4

- 17.** When a comb is rubbed on your hair and brought near bits of paper, it attracts them, because: [1]
- (a) The comb and the paper bits are oppositely charged
 - (b) The comb and the paper bits are similarly charged
 - (c) The paper bits are very light
 - (d) The paper can fly in the air
- 18.** Sensations felt by the nerve cells are transmitted to the brain through the _____. [1]
- (a) Retina
 - (b) Blind spot
 - (c) Optic spot
 - (d) Optic nerve
- 19.** Pick the odd one out. [1]
- (a) Leo Major
 - (b) Cassiopeia
 - (c) Great Bear
 - (d) Alpha Centauri
- 20.** Name a famous comet which can be seen every 75 or 76 years? [1]
- (a) Halley's comet
 - (b) Hale-Bopp
 - (c) Shoemaker-Levy 9
 - (d) Pluto

SECTION B

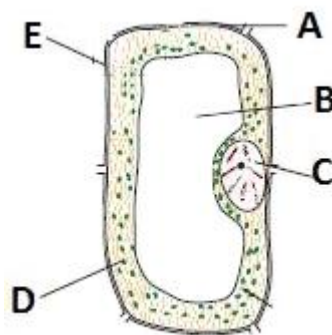
- 21.** Mention two important functions of the nucleus. [2]
- 22.** [2]
(a) Name two animals in which external fertilisation occurs.
(b) What do you mean by foetus?
- 23.** What do you understand by the terms menarche and menopause? [2]
- 24.** Write any two ways by which the HIV virus is transmitted from an infected person to a healthy person. [2]
- 25.** Explain combustible and non-combustible substances with the help of examples. [2]
- 26.** [2]
(a) Name two acids responsible for acid rain.
(b) Explain rapid combustion with the help of an example.
- 27.** How is drinking water purified by chemical methods? [2]
- 28.** Gold does not corrode. Despite this, gold ornaments start showing patches of other color after repeated use. Why? [2]
- 29.** What are focus and epicentre of an earthquake? [2]
- 30.** Mention some of the practical applications of artificial satellites. [2]

SECTION C

31. Sanya is confused and insecure about the changes happening in her body during adolescence. Her friends suggest that taking some drugs will help her feel relaxed and secure. Should Sanya take these drugs? Justify your answer. [4]

32. [4]
(a) What do you think will happen if the growth hormone is secreted in incorrect amounts?
(b) What would happen if insufficient quantities of insulin are produced?

33. What are chloroplasts? Locate them in the figure below. [4]



Why are they green in colour? What is their importance?

34. Write any three secondary sexual characteristics in females. Which hormone is responsible for the development of secondary sexual characteristics in females? [4]

35. [4]
(a) Why is a soda-acid fire extinguisher not successful in controlling fire caused due to burning oils?
(b) How does a soda-acid fire extinguisher work?

36. [4]
(a) What are the conditions necessary for combustion to take place?
(b) What are the characteristics of an ideal fuel?

37. [4]
(a) What is an oil spill? Why is it considered a water pollutant?
(b) Why is hot water released by industries and power plants considered a pollutant?

38. [4]

- (a) Can a solution, which is a poor conductor of electricity according to our testers, ever allow electric current to pass through it? Give an example.
- (b) Why distilled water is a poor conductor of electricity?

39. What is the function of a lightning conductor running through a tall building? What would happen if it is not installed in the building? [4]

40. [4]

- (a) Which star is situated in the direction of the Earth's axis? How can you identify it?
- (b) Write the names of any four Indian satellites.

SECTION D

41. [5]

- (a) Why does the diet of adolescents need:
 - i. Iodine
 - ii. Calcium
 - iii. Iron
- (b) Give reasons:
 - i. It is highly essential for teenagers to take a bath every day.
 - ii. All teenagers should walk and play in fresh air.

42. Briefly describe the human male reproductive system. [5]

43. [5]

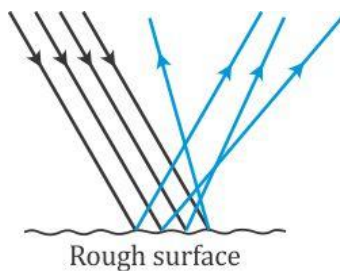
- (a) When fuels burn, the type of flame produced depends on the proportion of oxygen available for burning of the fuel. What are these different types of flame? Give examples.
- (b) Describe an activity to show that the middle zone of a candle flame consists of unburnt carbon particles.

44.

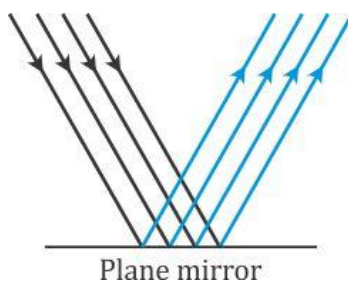
[5]

(a) Identify the type of reflection in the given figures.

i.



ii.



(b) Mention any three features of the image obtained by a plane mirror.