

**CBSE**  
**Class VIII Science**  
**Sample Paper – 4**  
**Term II**

**Time: 3 hrs**

**Total Marks: 100**

**General Instructions:**

1. The question paper consists of 44 questions and is divided into four sections, A, B, C and D
2. All questions are compulsory.
3. Section A comprises of question numbers 1 to 20. These are multiple choice questions carrying one mark each. You are to select one most appropriate response out of the four provided options.
4. Section B comprises of question numbers 21 to 30. These are SAQ's carrying two marks each.
5. Section C comprises of question numbers 31 to 40. These are SAQ's carrying four marks each.
6. Section D comprises of question numbers 41 to 44. These are SAQ's carrying five marks each.

**SECTION A**

**Attempt all questions from this section.**

1. Which gland stimulates the testes to release testosterone? [1]  
(a) Hypothalamus  
(b) Pituitary  
(c) Adrenal  
(d) Pancreas
2. What should be included in a balanced diet? [1]  
(a) Carbohydrates  
(b) Proteins  
(c) Lipids  
(d) All of these
3. Name the tissue which provides nutrition to the growing baby in the uterus. [1]  
(a) Placenta  
(b) Striated  
(c) Connective  
(d) Nervous

4. Internal fertilisation takes place in the [1]  
(a) Vagina  
(b) Oviducts  
(c) Uterus  
(d) Ovaries
5. What permits the cells of plants, fungi and bacteria to withstand very dilute external media? [1]  
(a) Cell wall  
(b) Cell membrane  
(c) Nuclear membrane  
(d) Protoplasm
6. What are the functional segments of chromosomes? [1]  
(a) Nucleus  
(b) Nucleolus  
(c) Chromatin fibres  
(d) Genes
7. The lowest temperature at which a substance catches fire is called its [1]  
(a) Heating temperature  
(b) Normal temperature  
(c) Ignition temperature  
(d) Boiling temperature
8. Global warming is caused due to \_\_\_\_\_ concentration of CO<sub>2</sub> in the atmosphere. [1]  
(a) Decreased  
(b) Increased  
(c) Constant  
(d) None of these
9. Sodium bicarbonate solution and concentrated sulphuric acid in a fire extinguisher react to produce [1]  
(a) Sulphur dioxide gas  
(b) Oxygen gas  
(c) Carbon dioxide gas  
(d) Nitrogen dioxide gas
10. Which of the following is not a property of an ideal fuel? [1]  
(a) Easy availability  
(b) Produces a lot of smoke  
(c) Catches fire easily  
(d) High calorific value

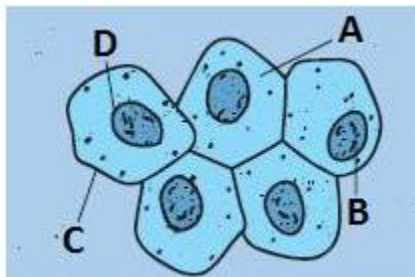
- 11.** Which product is seen when industrial chemicals combine with condensing water vapour? [1]  
(a) Ozone depletion  
(b) Acid rain  
(c) Global warming  
(d) Greenhouse effect
- 12.** Which of the following causes air pollution? [1]  
(a) Solar energy  
(b) Wind energy  
(c) Fossil energy  
(d) Water energy
- 13.** How is chlorination done to purify water? [1]  
(a) By adding chlorine tablets  
(b) By adding bleaching powder  
(c) By adding chlorine dioxide  
(d) All of the above
- 14.** A tester to detect weak currents should use [1]  
(a) Magnetic needle  
(b) Bulb  
(c) Bell  
(d) All of the above
- 15.** A cell is an example of conversion of [1]  
(a) Magnetic energy into chemical energy  
(b) Electrical energy into chemical energy  
(c) Chemical energy into electrical energy  
(d) Chemical energy into magnetic energy
- 16.** Lightning contains a tremendous amount of \_\_\_\_\_ energy. [1]  
(a) chemical  
(b) nuclear  
(c) heat  
(d) electrical
- 17.** The Earth's mantle lies between the [1]  
(a) Inner and outer core  
(b) Crust and outer core  
(c) Crust and light rocks at the surface  
(d) Crust and atmosphere

- 18.** We can see an object only when light is [1]  
(a) Emitted by the object.  
(b) Reflected by the object.  
(c) Emitted or reflected by the object.  
(d) Absorbed by the object.
- 19.** Which nerve cells can sense colour? [1]  
(a) Rods  
(b) Cones  
(c) Both rods and cones  
(d) Optic cells
- 20.** Which of the following was the first satellite launched by India? [1]  
(a) EDUSAT  
(b) INSAT  
(c) Kalpana-1  
(d) Aryabhata

**SECTION B**

21. Label A, B, C and D in the figure below.

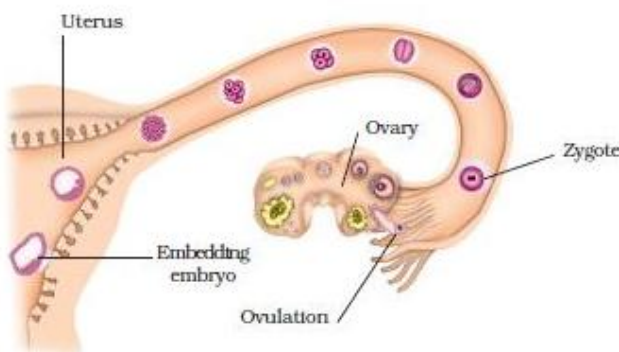
[2]



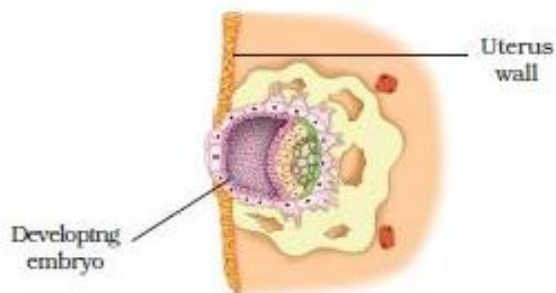
22. What do the figures given below represent?

[2]

(a)



(b)



23. What is a clone? Name one famous clone.

[2]

24. Write the function of:

[2]

(a) Insulin

(b) Growth hormone

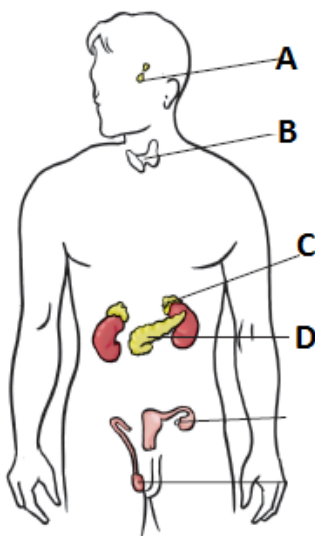
25. Which flame zone is used by a goldsmith to make gold jewellery and why?

[2]

26. Explain why hot water released by industries and power plants is considered a pollutant? [2]
27. What is an industrial effluent and what does it contain? [2]
28. Why does the amount of copper in a copper sulphate solution not reduce during electroplating of copper onto an iron object, even though copper from the solution gets deposited on one electrode continuously? [2]
29. What are tectonic plates? [2]
30. State the laws of reflection. [2]

**SECTION C**

31. Write any three ways of personal hygiene which need to be practised, especially by adolescents. [4]
32. [4]
- (a) Which hormones control metamorphosis in insects and frogs?
- (b) Which glands are represented by A, B, C and D in the figure below?



33. What is the cell membrane? Write its functions. [4]
34. Where are the adrenal glands located? Name the hormone secreted by the adrenal glands. Write its two important functions. [4]
35. What are the different ways to extinguish fire? Explain. [4]

- 36.** [4]  
(a) What are water pollutants?  
(b) How are humans affected by water pollution?
- 37.** Describe the harmful effects of acid rain on the following: [4]  
i. Forests  
ii. Aquatic animals  
iii. Buildings and monuments
- 38.** Define electroplating. List any three of its uses. [4]
- 39.** Does a charged object lose its charge on touching it with the hand? Explain. What is this phenomenon called? [4]
- 40.** [4]  
(a) Which region in the human eye is considered as blind spot?  
(b) How does the Braille system help visually challenged persons?

**SECTION-D**

- 41.** [5]  
(a) Give reasons:  
i. Adolescents are also called teenagers.  
ii. During puberty, there is a sudden increase in height.  
iii. In some adolescent boys, the voice becomes hoarse.  
(b) What is the difference between adolescence and puberty?
- 42.** [5]  
(a) Draw a labelled diagram of the female reproductive system.  
(b) What is the function of the fallopian tube?
- 43.** Describe the sources and harmful effects of the following air pollutants: [5]  
(a) Sulphur dioxide  
(b) Nitrogen oxides  
(c) Carbon monoxide
- 44.** [5]  
(a) Diagrammatically represent the various phases of the Moon seen from the Earth.  
(b) Give two uses of artificial satellites.